



4 2 2

Min block: **14 x 32 m**

Based on 4m front / 3.8m rear setback

The Belle is a functional design that has it all! Clever zoning connects 3 bedrooms to the rear of the home around a central Kids Zone, providing an innovative third living area. From the wide Entry to the Butler's Pantry and the dynamic shape of the Home Theatre, this beautiful home packs plenty of appeal onto land sized at only 14m x 32m!

KEY FEATURES

- Clever angles offer a dynamic flow from the front door through the house
- 3 Living Areas + Alfresco provides plenty of space for the whole family
- The Butler's Pantry offers an extension to the Kitchen for plenty of space to cater for both everyday meals and special occasions
- Enjoy an under-roof Alfresco with easy viewing into the backyard and get outdoors to soak up the sunshine

ROOM SIZES

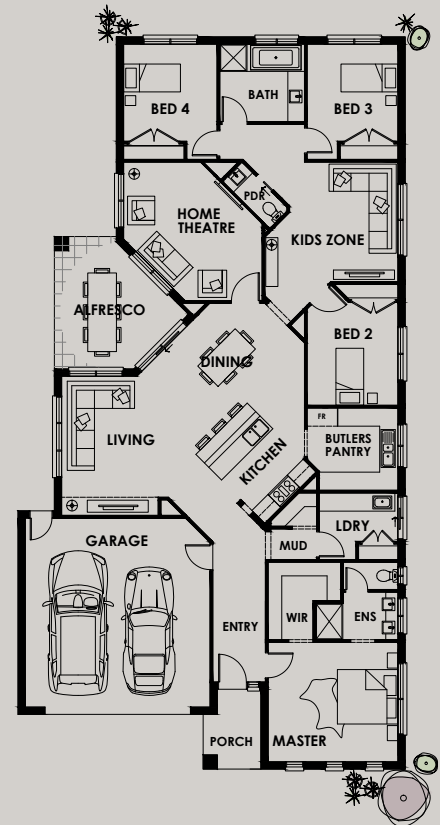
Master	4.3 x 3.9
Garage	6.1 x 6.2
Living	4.4 x 4.6
Dining	3.2 x 5.1
Alfresco	4.4 x 4.4
Home Theatre	6.5 x 3.6
Bed 2	3.0 x 3.4
Bed 3	3.0 x 3.2
Bed 4	3.1 x 3.2
Kids Zone	3.6 x 4.09

AREA ANALYSIS

Living	205.95m ²	(22.17sq)
Garage	41.37m ²	(4.45sq)
Porch	4.65m ²	(0.51sq)
Alfresco	14.51m ²	(1.56sq)
Total	266.48m²	(28.69sq)

OVERALL DIMENSIONS

Width	12800
Depth	24200



If required, we will make further adjustments to this design to make it perfect for you. Façade image for illustrative purposes only. The floorplan may illustrate features that are optional. All depth dimensions exclude porch/verandahs if they are protruding. Room sizes to be used as a guide only – refer to working drawings for all dimensions. Bedroom measurements are clear of robes. Lot width is based on Rescode regulations on a non-corner block.



Min block: **14 x 32 m**

Based on 4m front / 3.8m rear setback

The Belle is a functional design that has it all! Clever zoning connects 3 bedrooms to the rear of the home around a central Kids Zone, providing an innovative third living area. From the wide Entry to the Butler's Pantry and the dynamic shape of the Home Theatre, this beautiful home packs plenty of appeal onto land sized at only 14m x 32m!

KEY FEATURES

- Clever angles offer a dynamic flow from the front door through the house
- 3 Living Areas + Alfresco provides plenty of space for the whole family
- The Butler's Pantry offers an extension to the Kitchen for plenty of space to cater for both everyday meals and special occasions
- Enjoy an under-roof Alfresco with easy viewing into the backyard and get outdoors to soak up the sunshine

ROOM SIZES

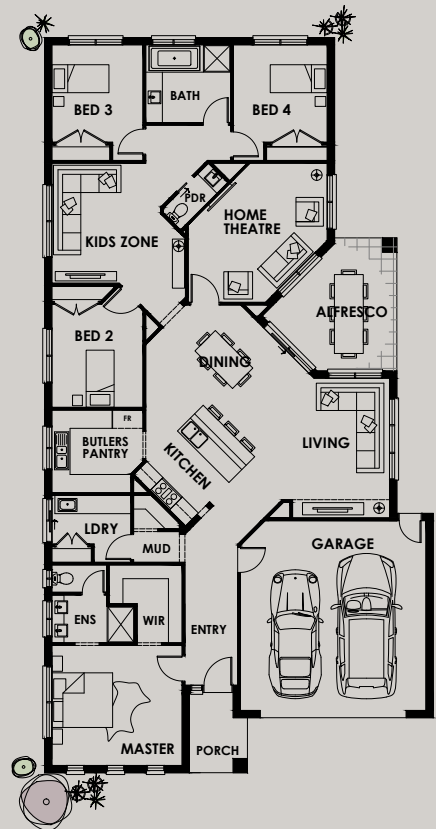
Master	4.3 x 3.9
Garage	6.1 x 6.2
Living	4.4 x 4.6
Dining	3.2 x 5.1
Alfresco	4.4 x 4.4
Home Theatre	6.5 x 3.6
Bed 2	3.0 x 3.4
Bed 3	3.0 x 3.2
Bed 4	3.1 x 3.2
Kids Zone	3.6 x 4.09

AREA ANALYSIS

Living	205.95m ²	(22.17sq)
Garage	41.37m ²	(4.45sq)
Porch	4.65m ²	(0.51sq)
Alfresco	14.51m ²	(1.56sq)
Total	266.48m²	(28.69sq)

OVERALL DIMENSIONS

Width	12800
Depth	24200



If required, we will make further adjustments to this design to make it perfect for you. Façade image for illustrative purposes only. The floorplan may illustrate features that are optional. All depth dimensions exclude porch/verandahs if they are protruding. Room sizes to be used as a guide only – refer to working drawings for all dimensions. Bedroom measurements are clear of robes. Lot width is based on Rescode regulations on a non-corner block.