

Laguna 319



4 2 2

Min block: **16 x 31 m**

Based on 4m front / 4m rear setback

Feel at home in the luxury of the Laguna 319! This home has it all with an opulent Master Suite, dedicated Home Theatre, an interactive central living zone and a separate Kids Zone at the rear. The angled kitchen is a feature and the hub of this friendly space where many wonderful memories will be created!

KEY FEATURES

- The Master Suite is both spacious and stylish - fully fitted with a stylish WIR, double vanity, optional bathtub and oversized shower
- Innovative angles and clever zoning gives this home a dynamic flow
- An additional Powder Room (optional) is positioned to the front of the home to service guests, or alternatively the space can be used for walk-in storage
- Enjoy a movie in your dedicated Home Theatre, or kick back in the central Living Zone whilst kids can enjoy their own space at the rear

ROOM SIZES

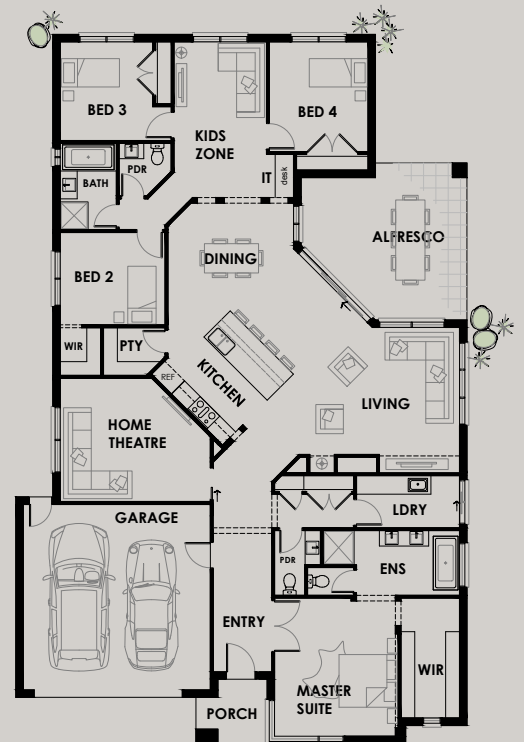
Master	4.0 x 4.5
Garage	6.1 x 6.0
Home Theatre	4.9 x 4.0
Living	5.4 x 4.7
Dining	4.1 x 3.5
Alfresco	5.4 x 5.1
Kids Zone	3.0 x 5.0
Bed 2	3.4 x 3.0
Bed 3	3.0 x 3.2
Bed 4	3.2 x 3.5

AREA ANALYSIS

Living	228.48m ²	(24.59sq)
Garage	39.93m ²	(4.29sq)
Porch	4.41m ²	(0.48sq)
Alfresco	23.35m ²	(2.52sq)
Total	296.17m²	(31.88sq)

OVERALL DIMENSIONS

Width	14630
Depth	23000



If required, we will make further adjustments to this design to make it perfect for you. Façade image for illustrative purposes only. The floorplan may illustrate features that are optional. All depth dimensions exclude porch/verandahs if they are protruding. Room sizes to be used as a guide only - refer to working drawings for all dimensions. Bedroom measurements are clear of robes. Lot width is based on Rescode regulations on a non-corner block.

Laguna 319



4 2 2

Min block: **16 x 31 m**

Based on 4m front / 4m rear setback

Feel at home in the luxury of the Laguna 319! This home has it all with an opulent Master Suite, dedicated Home Theatre, an interactive central living zone and a separate Kids Zone at the rear. The angled kitchen is a feature and the hub of this friendly space where many wonderful memories will be created!

KEY FEATURES

- The Master Suite is both spacious and stylish - fully fitted with a stylish WIR, double vanity, optional bathtub and oversized shower
- Innovative angles and clever zoning gives this home a dynamic flow
- An additional Powder Room (optional) is positioned to the front of the home to service guests, or alternatively the space can be used for walk-in storage
- Enjoy a movie in your dedicated Home Theatre, or kick back in the central Living Zone whilst kids can enjoy their own space at the rear

ROOM SIZES

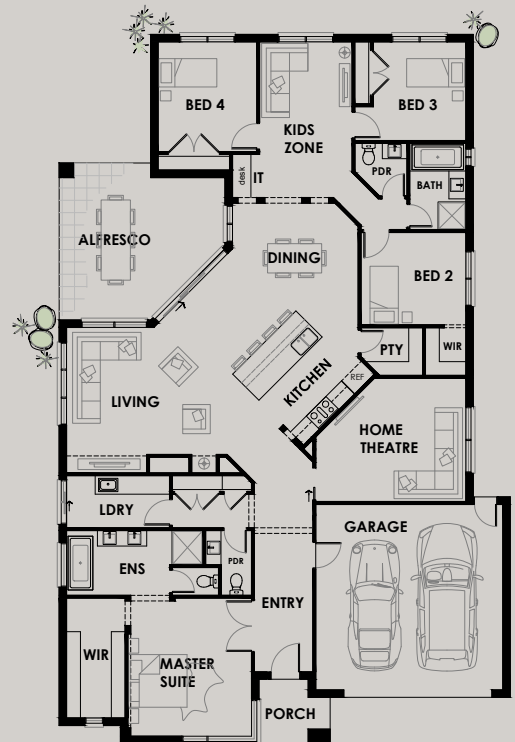
Master	4.0 x 4.5
Garage	6.1 x 6.0
Home Theatre	4.9 x 4.0
Living	5.4 x 4.7
Dining	4.1 x 3.5
Alfresco	5.4 x 5.1
Kids Zone	3.0 x 5.0
Bed 2	3.4 x 3.0
Bed 3	3.0 x 3.2
Bed 4	3.2 x 3.5

AREA ANALYSIS

Living	228.48m ²	(24.59sq)
Garage	39.93m ²	(4.29sq)
Porch	4.41m ²	(0.48sq)
Alfresco	23.35m ²	(2.52sq)
Total	296.17m²	(31.88sq)

OVERALL DIMENSIONS

Width	14630
Depth	23000



If required, we will make further adjustments to this design to make it perfect for you. Façade image for illustrative purposes only. The floorplan may illustrate features that are optional. All depth dimensions exclude porch/verandahs if they are protruding. Room sizes to be used as a guide only - refer to working drawings for all dimensions. Bedroom measurements are clear of robes. Lot width is based on Rescode regulations on a non-corner block.