

Laguna 422



5 2 3 1

Min block: **18 x 37 m**

Based on 4m front / 4m rear setback

Larger families will love this dynamic home, fully equipped with an oversized Triple Garage, 5 Bedrooms, 3 internal Living Areas, huge Alfresco, Butler's Pantry and a Study. This home takes larger family living to a new level!

KEY FEATURES

- A large Master Suite complete with His & Hers walk-in-robos, plus 4 other spacious Bedrooms arranged around a central Kids Zone and Bathroom
- An oversized triple garage fits three large cars plus plenty of additional storage
- Family living and entertaining is made easy under the huge Alfresco with plenty of space to dine and lounge outdoors
- Large kitchen with a grand island bench, excellent storage and a large Butler's Pantry with second sink

ROOM SIZES

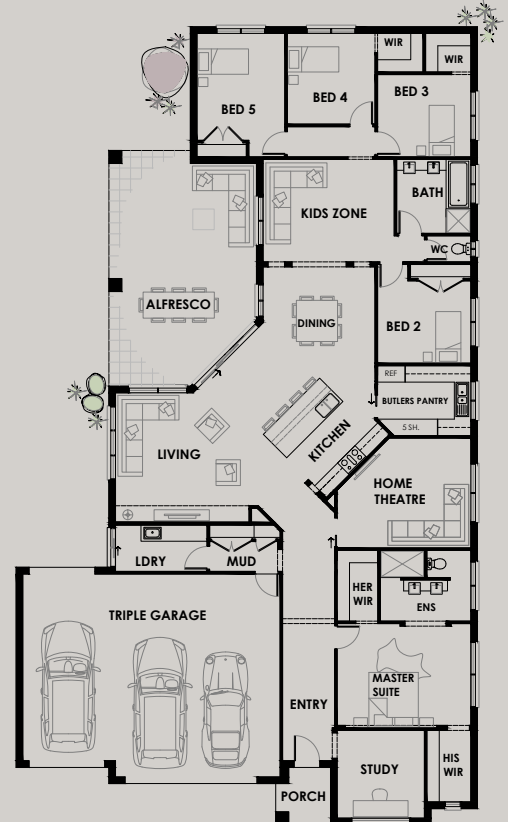
Study	3.2 x 3.2
Master	4.9 x 3.8
Garage	9.4 x 6.8 - 7.4
Home Theatre	4.9 x 4.0
Living	5.4 x 4.7
Dining	4.1 x 4.1
Alfresco	5.5 x 8.6
Kids Zone	4.8 x 3.7
Bed 2	3.4 x 3.0
Bed 3	3.4 x 3.0
Bed 4	3.2 x 3.3
Bed 5	3.2 x 3.9

AREA ANALYSIS

Living	273.03m ²	(29.39sq)
Garage	72.49m ²	(7.81sq)
Porch	3.91m ²	(0.42sq)
Alfresco	42.16m ²	(4.54sq)
Total	391.59m²	(42.15sq)

OVERALL DIMENSIONS

Width	16810
Depth	29080



If required, we will make further adjustments to this design to make it perfect for you. Façade image for illustrative purposes only. The floorplan may illustrate features that are optional. All depth dimensions exclude porch/verandahs if they are protruding. Room sizes to be used as a guide only – refer to working drawings for all dimensions. Bedroom measurements are clear of robes. Lot width is based on Rescode regulations on a non-corner block.

Laguna 422



5 2 3 1

Min block: **18 x 37 m**

Based on 4m front / 4m rear setback

Larger families will love this dynamic home, fully equipped with an oversized Triple Garage, 5 Bedrooms, 3 internal Living Areas, huge Alfresco, Butler's Pantry and a Study. This home takes larger family living to a new level!

KEY FEATURES

- A large Master Suite complete with His & Hers walk-in-robos, plus 4 other spacious Bedrooms arranged around a central Kids Zone and Bathroom
- An oversized triple garage fits three large cars plus plenty of additional storage
- Family living and entertaining is made easy under the huge Alfresco with plenty of space to dine and lounge outdoors
- Large kitchen with a grand island bench, excellent storage and a large Butler's Pantry with second sink

ROOM SIZES

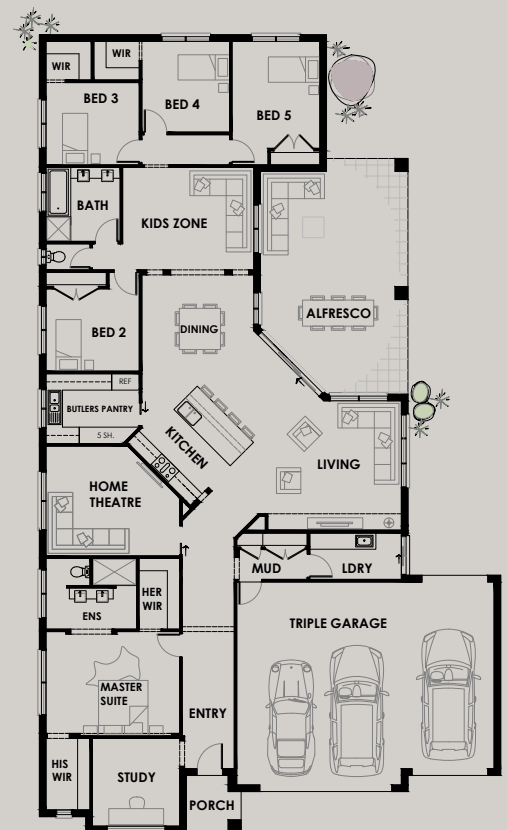
Study	3.2 x 3.2
Master	4.9 x 3.8
Garage	9.4 x 6.8 - 7.4
Home Theatre	4.9 x 4.0
Living	5.4 x 4.7
Dining	4.1 x 4.1
Alfresco	5.5 x 8.6
Kids Zone	4.8 x 3.7
Bed 2	3.4 x 3.0
Bed 3	3.4 x 3.0
Bed 4	3.2 x 3.3
Bed 5	3.2 x 3.9

AREA ANALYSIS

Living	273.03m ²	(29.39sq)
Garage	72.49m ²	(7.81sq)
Porch	3.91m ²	(0.42sq)
Alfresco	42.16m ²	(4.54sq)
Total	391.59m²	(42.15sq)

OVERALL DIMENSIONS

Width	16810
Depth	29080



If required, we will make further adjustments to this design to make it perfect for you. Façade image for illustrative purposes only. The floorplan may illustrate features that are optional. All depth dimensions exclude porch/verandahs if they are protruding. Room sizes to be used as a guide only – refer to working drawings for all dimensions. Bedroom measurements are clear of robes. Lot width is based on Rescode regulations on a non-corner block.