

Panama 465



Brimming with effortless elegance The Panama does not fail to leave a lasting impression. From the spacious and stylish ground floor equipped for entertaining, to the tranquility of the first floor exuding functionality for the entire family, The Panama won't fail to take your breath away again and again.

KEY FEATURES

- Large bedrooms suitable for beds of all sizes
- Enjoy the stunning formal lounge; or convert this space into a guest suite equipped with ensuite and walk-in-robe
- Keep an eye on the kids in the interactive study nook adjoining the kitchen
- Delight your guests and family with catering from the butler's pantry

ROOM SIZES

Lounge	4.2 x 4.8
Garage	6.0 x 6.0
Study Nook	1.6 x 2.3
Living	5.8 x 5.1
Dining	4.2 x 4.0
Home Theatre	4.1 x 4.4
Alfresco	4.1 x 7.6
Master	3.6 x 5.0
Leisure	5.5 x 6.0
Study Zone	3.2 x 1.9
Bed 2	3.6 x 3.7
Bed 3	3.7 x 3.8
Bed 4	3.2 x 3.8

AREA ANALYSIS

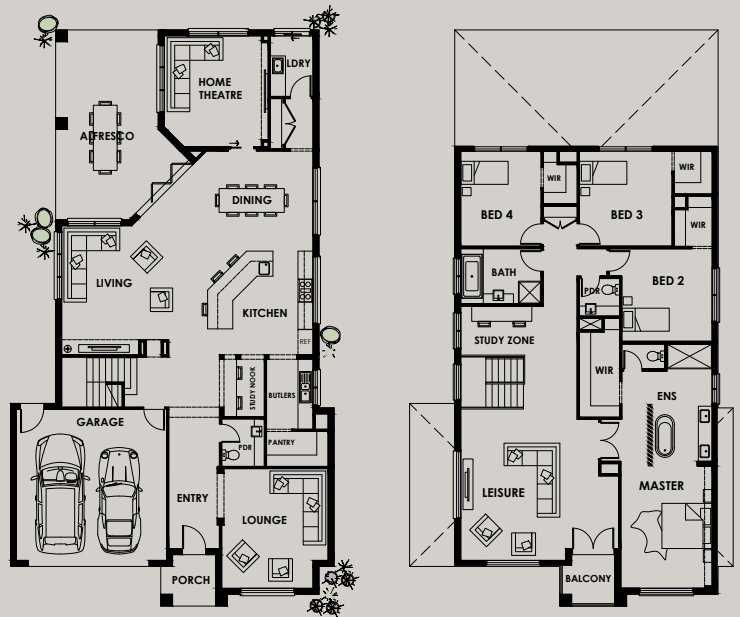
Living	351.95m ²	(37.87sq)
Garage	39.48m ²	(4.25sq)
Porch	4.49m ²	(0.48sq)
Alfresco	31.78m ²	(3.44sq)
Balcony	4.49m ²	(0.48sq)
Total	432.19m²	(46.52sq)

OVERALL DIMENSIONS

Width	12900
Depth	22500

4 2 2 2

Min block: **14 x 30 m**
Based on 4m front / 3.5m rear setback



If required, we will make further adjustments to this design to make it perfect for you. Façade image for illustrative purposes only. The floorplan may illustrate features that are optional. All depth dimensions exclude porch/verandahs if they are protruding. Room sizes to be used as a guide only – refer to working drawings for all dimensions. Bedroom measurements are clear of robes. Lot width is based on Rescode regulations on a non-corner block.

Panama 465



Brimming with effortless elegance The Panama does not fail to leave a lasting impression. From the spacious and stylish ground floor equipped for entertaining, to the tranquility of the first floor exuding functionality for the entire family, The Panama won't fail to take your breath away again and again.

KEY FEATURES

- Large bedrooms suitable for beds of all sizes
- Enjoy the stunning formal lounge; or convert this space into a guest suite equipped with ensuite and walk-in-robe
- Keep an eye on the kids in the interactive study nook adjoining the kitchen
- Delight your guests and family with catering from the butler's pantry

ROOM SIZES

Lounge	4.2 x 4.8
Garage	6.0 x 6.0
Study Nook	1.6 x 2.3
Living	5.8 x 5.1
Dining	4.2 x 4.0
Home Theatre	4.1 x 4.4
Alfresco	4.1 x 7.6
Master	3.6 x 5.0
Leisure	5.5 x 6.0
Study Zone	3.2 x 1.9
Bed 2	3.6 x 3.7
Bed 3	3.7 x 3.8
Bed 4	3.2 x 3.8

AREA ANALYSIS

Living	351.95m ²	(37.87sq)
Garage	39.48m ²	(4.25sq)
Porch	4.49m ²	(0.48sq)
Alfresco	31.78m ²	(3.44sq)
Balcony	4.49m ²	(0.48sq)
Total	432.19m²	(46.52sq)

OVERALL DIMENSIONS

Width	12900
Depth	22500

4 2 2 2

Min block: **14 x 30 m**
Based on 4m front / 3.5m rear setback



If required, we will make further adjustments to this design to make it perfect for you. Façade image for illustrative purposes only. The floorplan may illustrate features that are optional. All depth dimensions exclude porch/verandahs if they are protruding. Room sizes to be used as a guide only – refer to working drawings for all dimensions. Bedroom measurements are clear of robes. Lot width is based on Rescode regulations on a non-corner block.